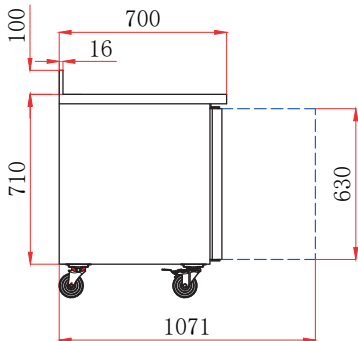


Freezer 1/1 Gastronorm Counters

700mm Depth With Coved Upstand



FEATURES	
Stainless steel exterior & interior	
Even air distribution by ducted system	
Heavy duty castors as standard	
Coved 100mm upstand as standard	
Internal corners rounded for easy cleaning	
1 x adjustable GN1/1 shelf per door	
Self closing doors with dwell position	
Replaceable door gasket	

TECHNICAL SPECIFICATIONS	
Cooling:	Ventilated
Controller:	Dixell controller
Defrost:	Automatic
Refrigerant:	R290
Climate Class:	4
Temperature Range:	-18°C ~ -22°C
Power Supply:	13amp

MODEL	GROSS CAPACITY	EXT. DIMENSIONS (H x W x D mm)	ENERGY RATING	POWER CONSUMPTION	KWH /ANNUM	DECIBELS	WEIGHT (kg)	RRP
LBC2	282L	950* x 1360 x 700	E	520W	2851	42dBA	133	
LBC3	417L	950* x 1795 x 700	E	560W	3357	42dBA	179	
LBC4	553L	950* x 2230 x 700	E	650W	3951	42dBA	196	

* includes 100mm upstand



See page 9 for full GN container range

