

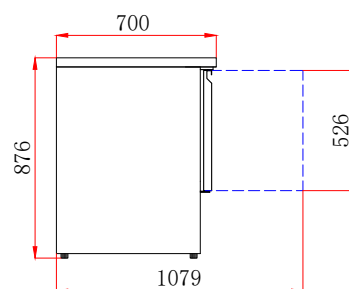
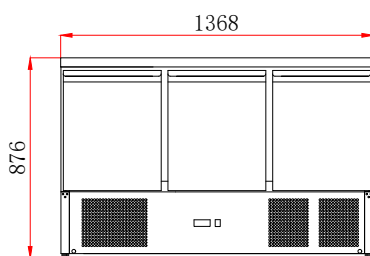
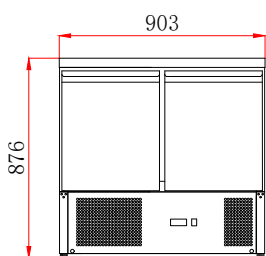
Compact Gastronorm Counters

700mm Depth

KXCC2



KXCC3



FEATURES

- 201 stainless steel exterior & interior
- Internal corners rounded to aid cleaning
- 1 x adjustable GN1/1 shelf per door
- Replaceable door gasket
- 35mm insulation
- 4 feet
- Removable condenser filter for cleaning

TECHNICAL SPECIFICATIONS

- Controller: Dixell controller
- Cooling: Fan assisted
- Defrost: Automatic
- Refrigerant: R600a (KXCC2)
R290 (KXCC3)
- Climate Class: 4
- Temperature Range: +2°C ~ +8°C
- Power Supply: 13amp

| MODEL | DOOR | GROSS CAPACITY | EXT. DIMENSIONS (H x W x D mm) | ENERGY RATING | POWER CONSUMPTION | KWH /ANNUM | DECIBELS | WEIGHT (kg) | RRP |
|-------|------|----------------|--------------------------------|---------------|-------------------|------------|----------|-------------|-----|
| KXCC2 | 2 | 240L | 876 x 903 x 700 | D | 170W | 1205 | 42dBA | 86 | |
| KXCC3 | 3 | 368L | 876 x 1368 x 700 | E | 240W | 1825 | 42dBA | 126 | |



See page 9 for full GN container range

